

ERGOMARE SA owns, the **two biggest floating cranes** in Greece (type LIMA 2400).

The two “sister-barges” over all platform dimensions are: **20,00 X 50,00 X 3,00 (m)**. Equipped with the most appropriate parts of several sizes (excavation buckets, rock handling grabs etc.) together with power generators, compressors, welding – sets, they offer full accommodation even when offshore.

Due to the big deck surface they can carry on board cargo up to 1.400 tons and they are suitable for carrying large parts (e.g. wind-power generators’ parts) that cannot be carried by other conventional vessels.

The LIMA 2400B heavy duty cranes offer the **most reliable solutions** for the marine and port infrastructure construction works allowing:

- **Lifting capacity up to 147 tons**
- **Under water soil (bottom) excavation** of up to 4.000 m² per working day
- **Placing of artificial concrete blocks** up to 1.000 m³ per day
- Placing of special artificial concrete blocks or breakwater protection (e.g. accropode, tetrapode) up to 1.200 m³ per day
- **Placing of natural big rocks weighing up to 20 tons each, with a daily production of 1.400 m³**

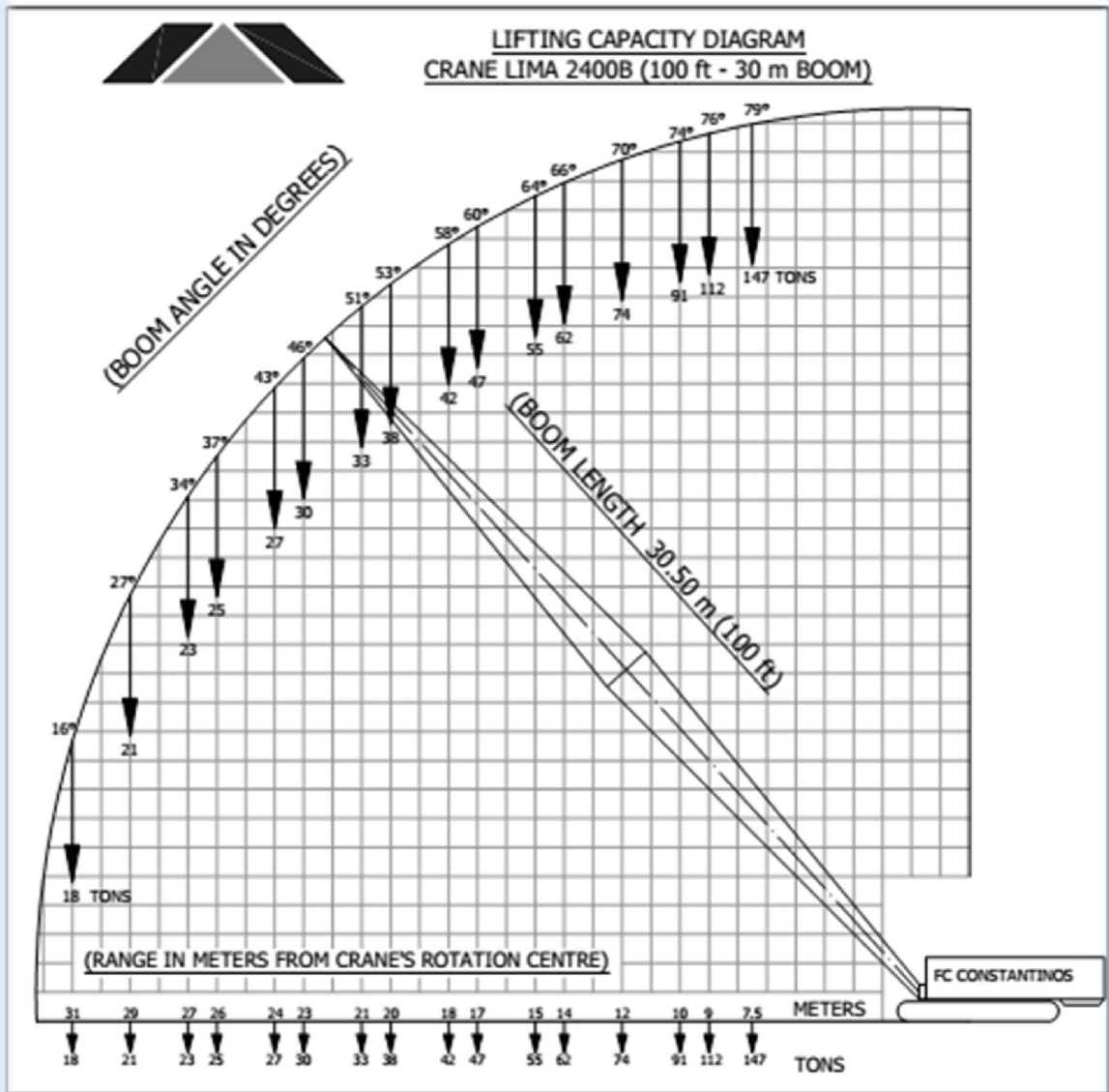


Main Features

LENGTH (OA)	50,30 m
BREADTH (OA)	20,00 m
DEPTH	3,00 m
NET TONNAGE	790,44 REG. TONS
TONNAGE	806,97 REG. TONS
BUILT	1978/ ROMANIA
CAPACITY	1400 tn
CAPACITY / m²	15,48 tn
GENERATOR 1	35 KVA
GENERATOR 2	12 KVA
ACCOMODATION	5 persons
CRANE	LIMA 2400B
CAPACITY	120 tn
ENGINE	Caterpillar D-379 /479hp–1200r.p.m.

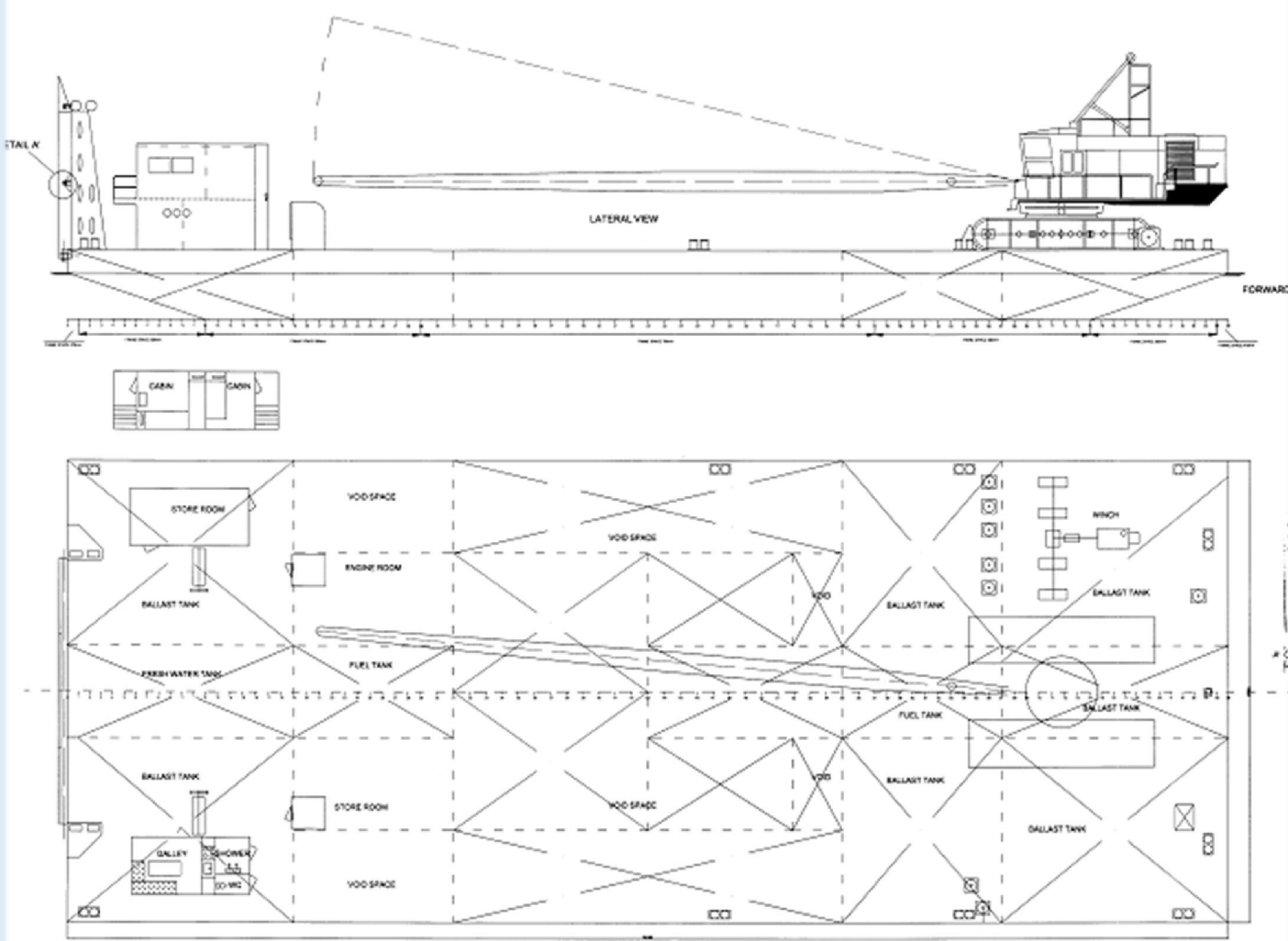


ISO 9001 : 2008
00 15 05 37
ISO 14.001 : 2004
04 01 51 51
OHSAS 18.001 : 2007
03 01 51 03



ISO 9001 : 2008
 00 15 05 37
 ISO 14.001 : 2004
 04 01 51 51
 OHSAS 18.001 : 2007
 03 01 51 03

Floating Cranes' General Plan and View



ISO 9001 : 2008
00 15 05 37
ISO 14.001 : 2004
04 01 51 51
OHSAS 18.001 : 2007
03 01 51 03