



**ERGOMARE S.A.**

Port and Marine Constructions



# Marina Projects' Portfolio *2013-2016*



**ERGOMARE S.A.**

Port and Marine Constructions

*ERGOMARE SA has a long track record of Port and Marine Constructions and Works in Greece for the last 35 years. Lately, the trend for new Marinas in Greece and the Eastern Mediterranean is growing. In this brochure, ERGOMARE' s recent portfolio (2013-2016) of completed Marinas is presented, comprising three Marinas:*

*The emblematic Miraggio Thermal Spa Resort's Marina*

*The Astros Marina and*

*The Serifos Island Marina*

*For each project, a description of the basic technical features is presented, together with rich photographic documentation.*

*After having delivered these projects, ERGOMARE has the right to proclaim Leadership in the Marina Construction field in Greece and the Eastern Mediterranean.*

**John C. Bitounis**  
**Civil Engineer NTUA**  
**CEO**





**ERGOMARE S.A.**

Port and Marine Constructions



***Project No1:***  
***Miraggio Thermal Spa Resort Marina, 2015-2016***  
***Kanistro, Cassandra peninsula, Halkidiki***



*Drone view on the Resort's opening day, May 2016*

## *Miraggio Thermal Spa Resort Marina, 2015-2016*

The project was very demanding technically as the Marina is "off - shore". Its access to it is done through on-the-sea bridge seated on precast foundation piles and built within a record-time of 16 months.

The project sizes :

- Construction of 84 berthing spots Marina in a luxury hotel complex
- 300 m. of quay wall, protected by natural big stones up to 15 tons each
- 100 m bridge on pre cast concrete piles founded underwater
- Floating pontoon 60 m. long
- Marine transport of 150.000 m<sup>3</sup> gravel and stones.

The main port project was constructed at a distance from the shore in order not to disturb the parallel with the coast streams, which could lead to deterioration of the Coast-line. Connection with the land is achieved by a bridge, founded on precast concrete piles placed by drilling and punching.

The superstructure of the bridge was made of precast parts (beams and slabs) as well as in situ concrete injections.

For this project over 100 employees worked in three floating equipment pieces (two Floating cranes, floating excavator, drilling and percussion template), two tug boats and land crews.

ERGOMARE was also awarded a road-building contract as well as pavements, surroundings landscaping and buildings.

The Resort and Marina commenced operations in June 2016.



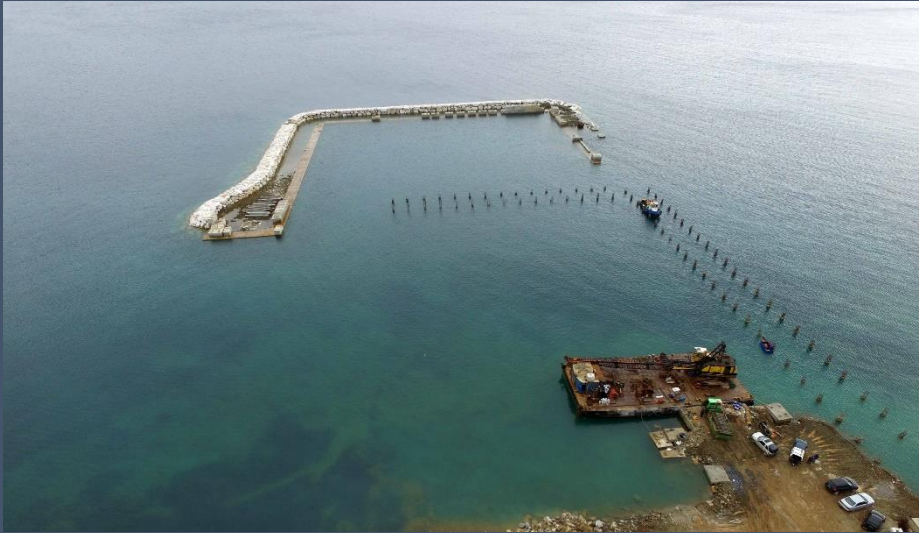
*The first boats birthing in the Marina, June 2016*



**ERGOMARE S.A.**

Port and Marine Constructions

## *Miraggio Thermal Spa Resort Marina, 2015-2016*



Precast foundation piles,  
November 2015



Breakwater stones placement  
by excavator



Bridge precast parts mounting



**ERGOMARE S.A.**

Port and Marine Constructions

## *Miraggio Thermal Spa Resort Marina, 2015-2016*



Boat launching ramp



Aerial view, November 2015



Bridge electromechanical wiring



**ERGOMARE S.A.**

Port and Marine Constructions

## *Miraggio Thermal Spa Resort Marina, 2015-2016*



Intermediate phases of works,  
surveying



Breakwater protection by big  
stones, brought on site by boat



Bridge' s final shape



Port and Marine Constructions

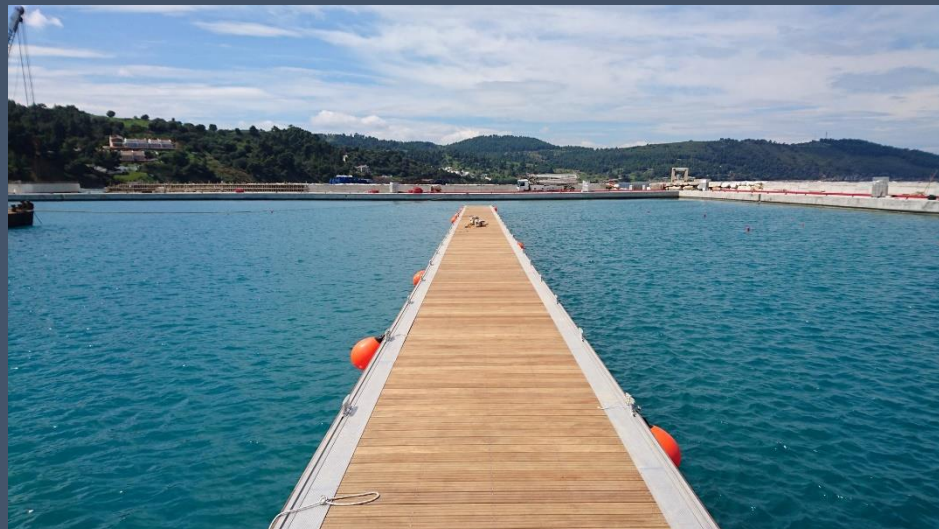
## *Miraggio Thermal Spa Resort Marina, 2015-2016*



The floating pontoon's pieces received



View of the Marina from the Resort's suites



Floating pontoon 60 m. long





**ERGOMARE S.A.**

Port and Marine Constructions

## *Miraggio Thermal Spa Resort Marina, 2015-2016*



Floating pontoon and birthing buoys.



**ERGOMARE S.A.**

Port and Marine Constructions



***Project No2:  
The Astros Marina, 2013-2014  
Paralion Astros, Peloponnese***



*Drone view, May 2015*



**ERGOMARE S.A.**

Port and Marine Constructions

## *The Astros Marina, 2013-2014*

A complex project, mixing the technical features of piscatorial shelter (fisheries' port) with the demands of a modern Marina. The project comprised:

- Reconstruction of 90 m long quay wall with bored piles 100 mm diameter.
- Downwind dock extension for 35 m.
- Channel dredging.
- Coastal pier 85 m long with hoist ramp
- Basin dredging at -4,50 m depth.
- Floating docks (pontoons) 190 m long with bridge
- Pillars



*Drone view, May 2015*



**ERGOMARE S.A.**

Port and Marine Constructions

## *The Astros Marina, 2013-2014*



Concrete block placing by the floating crane



Breakwater protection stone laying by the floating crane



Windward pier under construction



**ERGOMARE S.A.**

Port and Marine Constructions

## *The Astros Marina, 2013-2014*



Bassin dredging by Floating Excavator – Split Hopper Barge – Tug Boat



**ERGOMARE S.A.**

Port and Marine Constructions

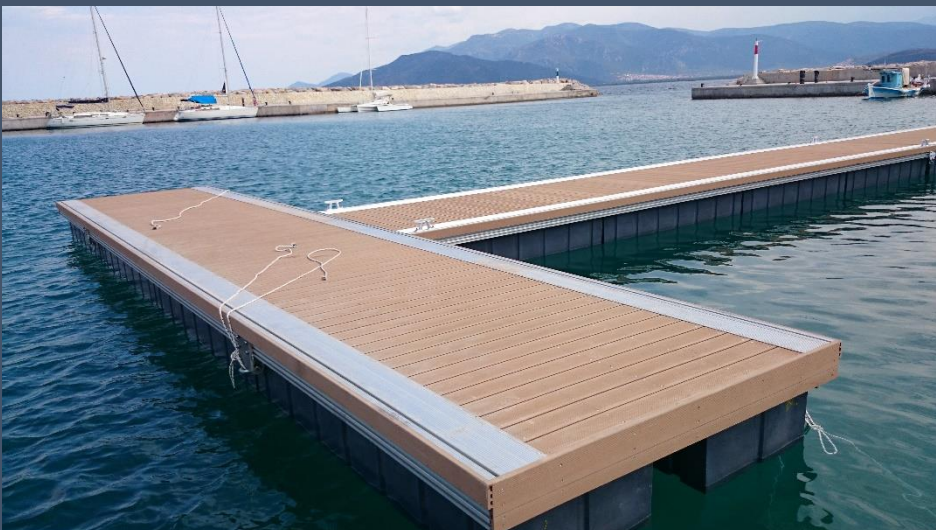
## *The Astros Marina, 2013-2014*



Concrete pavement finishing



Traditional stone-laying pavement



Floating pontoon



**ERGOMARE S.A.**

Port and Marine Constructions

## *The Astros Marina, 2013-2014*



Floating pontoon' s connection bridge.



Electricity – watering pillar + fire fighting pillar



**ERGOMARE S.A.**

Port and Marine Constructions



**Project No3:**  
*Serifos island Marina, 2014-2016*  
*Serifos island, Cyclades complex*



*Drone views, May 2015*





**ERGOMARE S.A.**

Port and Marine Constructions

## *The Serifos Marina, 2014-2016*

The municipal Marina of Serifos, a classic Cyclades island. Capable to host 50 boats, enhancing the tourist market of the island. The project comprised;

- 25.000 m3 of basin dredging
- 5.000 m3 of reinforced concrete constructions
- Anchorage chain



*Floating crane – barge – tug boat in dredging operations*



**ERGOMARE S.A.**

Port and Marine Constructions

## *The Serifos Marina, 2014-2016*



Concrete blocks construction on land



View of the Marina from the Resort's suites



**ERGOMARE S.A.**

Port and Marine Constructions

## *The Serifos Marina, 2014-2016*



View of the dock with the pillars



Concrete blocks placed in the sea



Port and Marine Constructions

*ERGOMARE SA, the leader in Marina constructions  
in Greece and the Eastern Mediterranean.*

ERGOMARE SA is the only construction company in Greece that is specialized exclusively in the port and marine infrastructure construction field, keeping alive a family tradition of more than 30 years.

Founded by Constantine Bitounis, an inspirational Civil Engineer, ERGOMARE SA is specialized in the field of port and marine infrastructure construction, with focus on medium and large scale projects, usually the most challenging ones in terms of technical and geographical complexity.

With state-of-the-art techniques deriving from the accumulated company experience and know-how, coupled with the company-owned modern equipment, ERGOMARE SA can provide three complete sets of machinery (floating cranes or excavators, tugboats and barges) and implement every aspect of the marine infrastructure work with the highest standards of safety and efficiency:

ERGOMARE SA is registered with the Greek Ministry of Infrastructure registry of public works Contractors for the construction mainly of Port/Marine works but also Road construction, Hydraulic works, Building and Industrial/ Energy works.

ERGOMARE SA brings solid experience, specialized personnel and modern machinery and equipment to its clients, and is proud to provide integrated solutions for any offshore construction or service.



ISO 9001 : 2008  
00 15 05 37  
ISO 14.001 : 2004  
04 01 51 51  
OHSAS 18.001 : 2007  
03 01 51 03